



National Agromet Advisory Service Bulletin

based on

Extended Range Weather Forecast

Valid for 19th June to 2nd July, 2015

Date of Issue: 19th June, 2015

Issued by

**Earth System Science Organisation
India Meteorological Department**

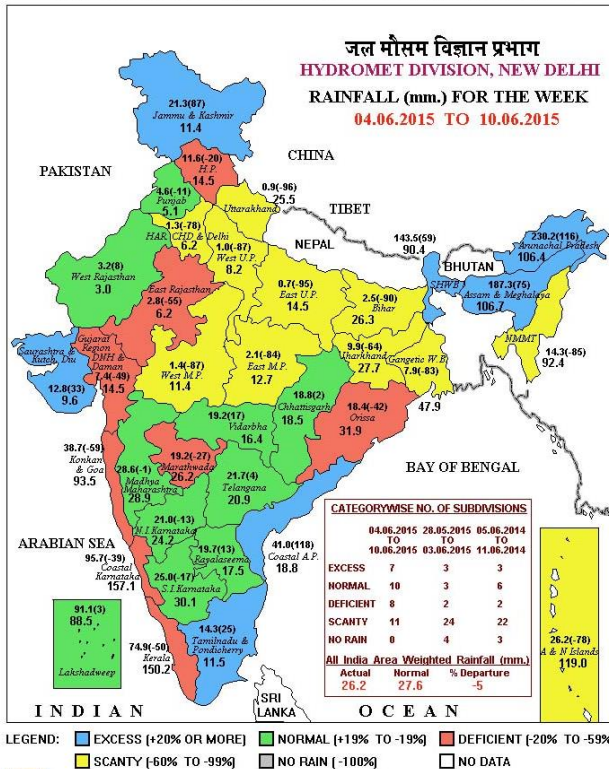
Indian Institute of Tropical Meteorology, Pune

&

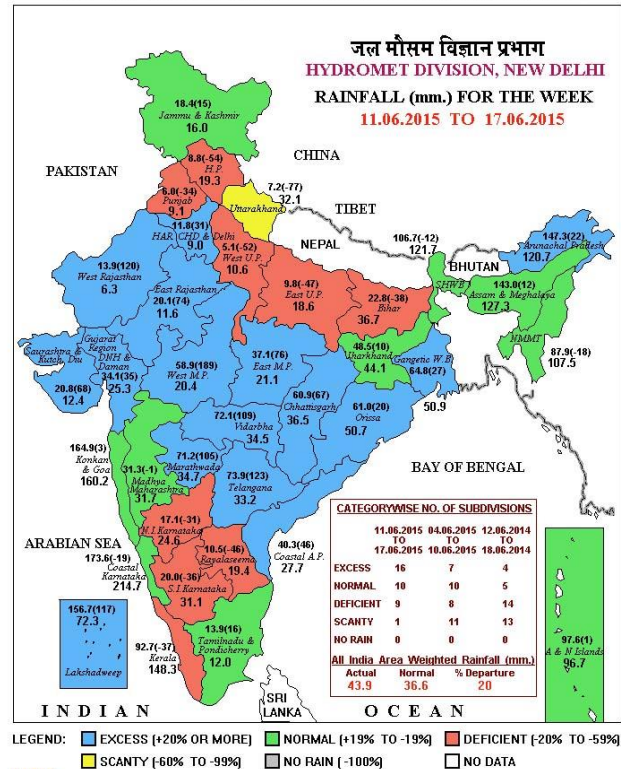
**Indian Council of Agricultural Research
AICRPAM, CRIDA, Hyderabad**

Realized Rainfall (4th to 17th June 2015)

भारत मौसम विज्ञान विभाग INDIA METEOROLOGICAL DEPARTMENT



भारत मौसम विज्ञान विभाग INDIA METEOROLOGICAL DEPARTMENT



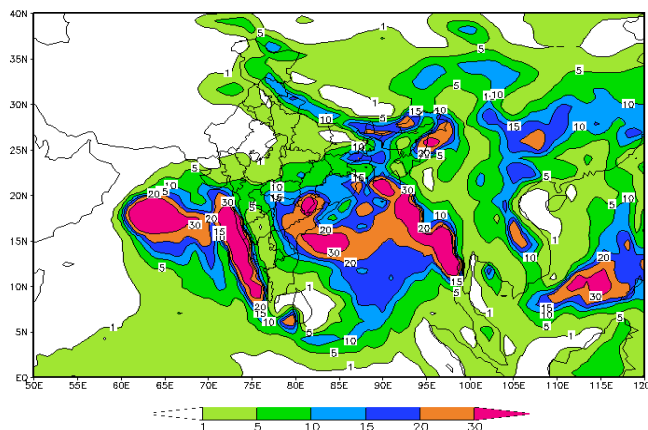
- Normal or above normal rainfall occurred during last two weeks in Tamil Nadu, Coastal Andhra Pradesh, Telangana, Madhya Maharashtra, Vidarbha, Saurashtra & Kutch, Chhattisgarh, West Rajasthan, Sub-Himalayan West Bengal & Sikkim, Arunachal Pradesh, Assam & Meghalaya and Jammu & Kashmir.
- Normal or above normal rainfall occurred in either of the last two weeks in Karnataka, Rayalaseema, Konkan & Goa, Marathwada, Madhya Pradesh, Gujarat, Odisha, Jharkhand, Gangetic West Bengal, Nagaland, Manipur, Mizoram, Tripura, East Rajasthan, Punjab and Haryana & Delhi.
- Below normal rainfall occurred in the last two weeks over remaining parts of the country.

Extended Range Forecast System

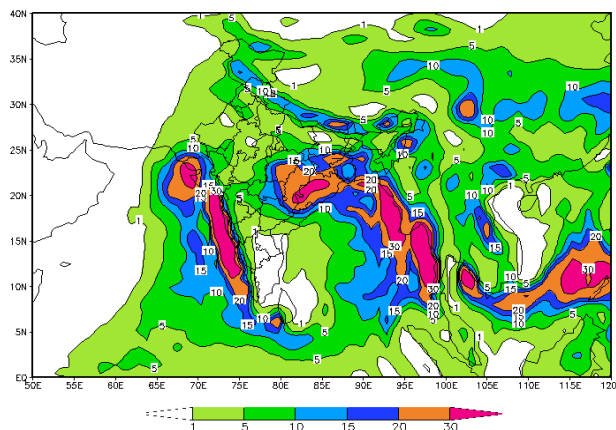
Subdivisionwise rainfall forecast map for the next 2 weeks (IC =17 June)

Rainfall forecast (mm/day) (19 June - 2 July, 2015)

Week 1 (19-25 June)

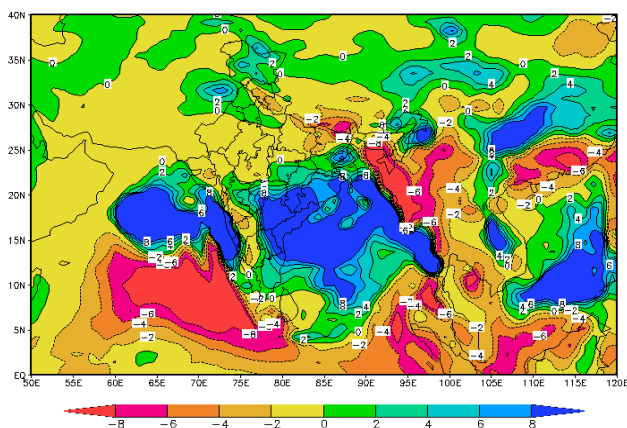


Week 2 (26 June - 2 July)

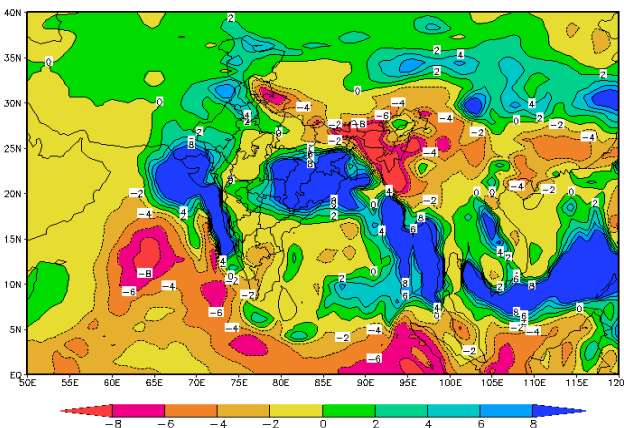


Rainfall Anomaly (mm/day) (19 June - 2 July, 2015)

Week 1 (19-25 June)

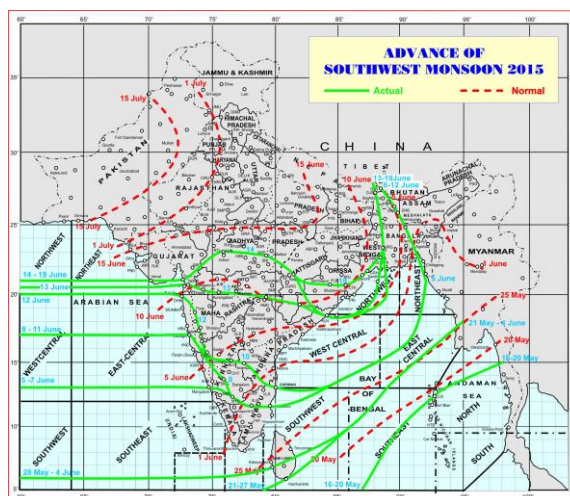


Week 2 (26 June - 2 July)



- The MME forecast indicates increase of rainfall over eastern coastal belt and adjoining central India during week1 (19-25 June) along with some parts of south Peninsula.
- Increase in rainfall over Northwestern parts during week 2 (26 June-02 July).
- Along with that, rainfall activity over eastern states will continue and it will decrease over south Peninsula during this week (26 June-02 July).

Advance of Southwest Monsoon - 2015



- The southwest monsoon has further advanced into some more parts of Chhattisgarh, Odisha and Gangetic West Bengal and remaining parts of Coastal Andhra Pradesh and Bay of Bengal.
- As on 19th June, 2015, the Northern Limit of Monsoon (NLM) now passes through Lat. 21.0°N / Long. 60.0°E, Veraval, Surat, Ujjain, Narsinghpur, Raipur, Phulbani, Cuttack, Digha, Krishnanagar and Darjeeling.
- Conditions are favourable for further advance of southwest monsoon into some more parts of Chhattisgarh, Odisha and West Bengal during next 48 hours. Conditions are also favourable for further advance of southwest monsoon into some more parts of north Arabian sea and Gujarat during next 72 hours.

Agromet Advisories for land preparation and sowing of *kharif* crops

Good rainfall occurred mainly over the States of southern peninsula and northeastern parts of the country as well as Maharashtra, Chhattisgarh and Sub-Himalayan West Bengal and Sikkim during last fortnight. Regions like Madhya Pradesh, Odisha, Jharkhand and Gangetic West Bengal also received rainfall during last week. Rainfall is also likely to occur over southern peninsula, Northeastern and eastern States, eastern coastal belt and adjoining central India during next two weeks. Increase in rainfall over Northwestern parts is also expected during later part of next fortnight. In view of the above, following agricultural activities are suggested for different parts of the country.

Information on seed selection and required inputs like seeds of crops and varieties, sources of seeds etc. can be collected from KVKs, State Departments of Agriculture in the Districts, SAUs, Kisan Call Centre, seed dealers and other NGOs or agencies.

Kerala

- Sowing of upland rice, wet seeding of rice variety Uma and dry seeding of *virippu* rice.
- Transplanting of *virippu* rice. Apply 140 kg lime and 2 tons organic manure for one acre land. Transplant seedlings at 4-5 leaf stage. The roots of the seedlings should be dipped in the solution of *Pseudomonas* culture for 30 minutes to control sheath blight, sheath root, leaf spot disease etc.
- Weather conditions favour the incidence of leaf folder and stem borer attack in paddy. Use

trichogramma cards @ 2CC per acre. Cut the card in to small pieces and fix in different locations of the paddy field. Replace the cards during every two weeks. If the attack is severe, apply Quinalphos (2ml per one litre of water) or cartap hydrochloride (25g per one hectare).

- Planting of pepper, tapioca, coconut saplings, arecanut, banana (Poovan, Robusta and Kannan varieties in Problem Area Zone and Robusta, Palayankodan, Njalipoovan in Southern and Northern Zones), mango, cocoa, turmeric and transplanting of brinjal.
- Planting of new rubber seedlings.
- Inter cropping can be started in coconut gardens.
- Banana: Provide propping for bunched Nendran plants. Protect soil moisture through trash mulching.

Karnataka

- Nursery sowing and transplanting of *kharif* rice (Intan, Abhilash, Mugad Siri-1253 and Hemavati for low land, Amrut and Prasanna for upland), direct sowing of rice in uplands, nursery preparation and sowing of ragi, sowing of cotton (DHH-11, NCH-145, NHH-44, DHB-105 and Sahana), planting of ginger and turmeric and transplanting of arecanut seedlings in Coastal Karnataka.
- Nursery sowing of rice, ragi and vegetables, direct sowing of ragi (GPU- 28, MR -01, 02 and 06, KMR-301), sowing of cotton, jowar, maize, pulses *viz.*, cowpea, red gram (TTB -7, BRG -01, BRG- 02, HYD -3C), green gram, black gram, horse gram and oil seed crops like sesamum and groundnut in South Interior Karnataka.
- Nursery sowing of rice and ragi, sowing of green gram, black gram, sorghum (Hybrids – CSH-14, CSH-16, CSH-18 and other varieties – CSV-15, DSV-3, DSV-6 and DSV-2) and soybean, red gram, sunflower, maize, Bt. cotton, bajra, sesamum and groundnut and also intercropping like bajra + groundnut (bunch) (2:4), bajra + redgram (2:1), groundnut (bunch) + red gram (3:1 or 4:2), red gram + sesamum (1:2 or 2:4) in light and medium black soils, planting of fruit trees in North Interior Karnataka.
- Animals: Vaccination against Black Quarter and foot & mouth diseases.
- Maintain optimum room temperature in Silkworm and poultry rearing houses.

Andhra Pradesh

Coastal Andhra Pradesh

- Nursery sowing of rice (Pushkala, Rasi, IR64).
- Sowing of finger millet, sesame, groundnut, maize, pulses, cotton, black gram and planting of rainfed sugarcane.

Rayalaseema

- Sowing of *kharif* groundnut and rice in Chittoor and Kadapa districts.
- Land preparation and transplanting of rice in Nellore district.
- Sowing of irrigated cotton, castor (PCH-111, PCH-222, Kranti, GCH-4, Haritha), maize and cluster bean in Anantpur district.
- Sowing of medium and long duration varieties of turmeric in Kurnool district.
- Sowing of jowar and *Korra* (Surya Nandi, Sri Lakshmi, SIA-3085, Krishnadevaraya) in black soil.
- Nursery sowing of brinjal.

Telangana

- Nursery sowing of rice, sowing of rainfed crops like cotton (black soil: MCU-5, LRA 5166, Narasimha, NA 1588, hybrids: JKHY 1, ADBHY 1, NHH 44), maize, groundnut (black soil: Kadiri 3, ICGS 44, JL 24, JCS 88, TG 26, Vemana, red soil: JCG 88, Vemana, Kadiri 4, Kadiri 6, ICGS 11, ICGS 44, Abhaya, Prasuna, TAG 24, Kadiri 9, Narayani), jowar (CSH 5, CSH 6, CSH 9, CSH 12, NTJ 4, CSV 216 R, Moti), soybean, pulses like red gram (black soil: ICPL 85063, MRG 66, WRG 27), horse gram (Palem 1, Palem 2), green gram, castor (Aruna, Kranti, Haritha, Kiran, PCH 111, DCH 177) and sesame (Gowri, Madhavi, YLM 11, YLM 17, Chandana, Swetha-Thil, Hima, Rajeshwari) etc.
- Planting of new saplings in the orchards.

Tamil Nadu & Pondicherry

- Nursery sowing of *kuruvai* rice (ADT 36, ADT 43, ADT 45 and Co 51) in Nagapattinam, Thanjavur, Thiruvavur and Trichy districts and nursery raising of SRI cultivation of rice.
- Sowing of ragi and tomato in raised bed for nursery seedlings.
- Planting of wetland banana in High Rainfall Zone.
- Pruning in monsoon grape crop.

Arunachal Pradesh

- Nursery sowing of normal *kharif* rice.

Assam

- Nursery bed preparation and sowing of *sali/kharif* rice and sowing of red gram.
- Complete the sowing of long duration rice cultivars like Ranjit, Gitesh, Pankaj, Bahadur, Kushal, Piolee etc. within third week of June.
- Sowing of medium duration rice varieties Satyaranjan, Bosundhora, T.T.B.-404, Mulagabharu, Kanaklata, Joymoti, IR-36, IR-64 etc. sown within first week of July after receding of flood water.
- If flood water does not recede within June, these varieties can be opted.
- Varieties Manohar Sali, Biraj, Solpona etc. are recommended for post flood transplanting. Jalashree and Jalkunwari recommended for chronically flood affected areas.

In remaining areas of Assam-

- Nursery sowing of *sali / kharif* rice (Long duration high yielding varieties: Ranjit, Bahadur, Peoli, Moniram, Pankaj, Kushal, Swarna sub-1, Gitesh, Pankaj, Mashuri for growing in typical lowland area, medium duration rice varieties: Satya and Basundhara in medium lowland area).
- Sowing of arhar (T-21).
- Planting of guava, seedlings of papaya in the main field. The recommended varieties are Coorg Honey Dew, Washington, Halflong, Ranchi etc.
- Sowing of groundnut and planting of banana, lemon, pineapple and papaya upto June month.
- Fodder crops: Rooted slips of fodder crops like Hybrid Napier, Setaria and Guinea etc. may be planted due to sufficient moisture in the field.
- Animals: Go for vaccination against Foot & Mouth disease and other bacterial diseases in bovine population (cattle, goat, buffalo etc.).

Meghalaya

- Nursery sowing of *sali* / *kharif* rice (HYVs like Shahsarang -1, Lampnah, IR 64, Ranjit, RCPL 1-412, RCPL 1-410, RCPL 1-411 & local varieties like Mendri, Manipuri).
- Sowing of soybean (JS 335, Bragg, Ankur, Pusa Soyabean-1, Local JS 2).
- Sowing of groundnut (ICGS 76, JL 24), black gram, green gram and red gram (HYVs like UPAS-120, ICPL 87 (short duration), WB 20, Pusa 9 & Sarita (long duration)) and planting of ginger and turmeric.

Nagaland

- Nursery sowing for lowland rice (short to medium duration HYV rice: CAU R1, CAU R3, RCM-9 and RCM-1).
- Sowing of maize (DA 61A, RCM-75, RCM-76 and HQPM-1).

Manipur

- Nursery preparation and transplanting of *kharif* rice.
- Sowing of *kharif* maize, *soybean* (JS-335, groundnut (ICGS-76) and black gram.
- Nursery raising of early cauliflower.

Mizoram

- Sowing of rice, maize, okra, colocasia and transplanting of brinjal and tomato.
- Nursery preparation for *hasi* mandarin and passion fruit.
- Land preparation for planting of ginger and turmeric.

Tripura

- Nursery sowing of *aman* rice (Gomati, Ranjeet, Swarna, Naveen).
- Sowing of groundnut (TAG 24, TG 37A, ICGS 76) and maize (DMH- 849, 117, HQPM 1, BQPM 9) in upland and medium upland.
- Planting of banana.

Maharashtra

Konkan

- Nursery sowing and transplanting of *kharif* rice and finger millet.
- Direct sowing of finger millet, pulses and vegetables.
- Fishery: Book for fish seed at District Fisheries Department Office.

Madhya Maharashtra

- Nursery sowing and transplanting of *kharif* rice in Kolhapur region, Western Ghat region (Nashik) and Pune (western parts).
- Land preparation and sowing of *kharif* jowar, bajra and soybean (in Kolhapur region), cotton, green gram, black gram, redgram and sunflower.
- *Kharif* jowar: Use recommended varieties like S.P.V. 462, 475, 946, S.S.V. 84, Phule amruta.
- Bajra: Use Hybrid varieties Shradha (I.H.R.B.H.-8609) Saburi (I.H.I.B.H-8924) Improved varieties W.C.C.-75, I.C.T.P-8203.
- Sunflower: Recommended varieties are E.C.68414, Modern, S.S.56, K.B.S.H.-11, S.P.S.H.-11.

Marathwada

- Land preparation and sowing of *kharif* green gram, black gram, redgram, jowar, soybean, cotton and sunflower.

Vidarbha

- Land preparation and sowing of *kharif* soybean, cotton, jowar, green gram, black gram,

redgram and sunflower.

- Nursery sowing and direct sowing of rice in east Vidarbha.

Gujarat

- Nursery sowing of *kharif* rice (GNR-2 (Coastal region), GNR-3, 4, Gurjari, NAUR-1, IR-28, Jaya) in South Gujarat.
- Sowing of groundnut, cotton, soybean, pulses like black gram (T-9, GU-1), green gram (GM-3, GM-4, K-851), cowpea (Gujarat Cowpea-1, 2, 4, Pusa Falguni), pigeon pea (Vaishali, GT-100, GTH-1, BHSR-711), ginger and turmeric in south Gujarat.
- Sowing of groundnut, pearl millet and pulses in north Gujarat.
- Land preparation and sowing of *kharif* groundnut (semi spreading: GG-20, bunch: GG-2, GG-5, TAG-24, TG-37 A, TPG-41, TLG-45), cotton (GCH-6, GCH-8, Agritop-444, Solar-76, Beejdhan-2, Ajit-155, Mallika, RCH-II, Vikram-5), pulses (green gram, black gram, cowpea, pigeon pea), pearl millet (GHB-558,577,538,719,732,744) and sesame (GT-1, GT-2 or GT-3) in north Saurashtra.
- Sowing of groundnut (GG-20, GG-11), soybean (Gujarat Soybean-1, 2, 3), cotton (Bg-II GCH-6, 8, Mallika, Agit, Vikram-5, Uttam, etc.) in south Saurashtra.
- Sowing of irrigated B.T. cotton.
- Plantation of new orchards like mango, papaya, sapota, lemon and pomegranate.
- Bunding of field to conserve rain water.

Madhya Pradesh

- Sowing of soybean (JS 9305, JS 9560, RVS 2001-4), maize and groundnut, nursery preparation for sowing of *kharif* vegetables like tomato, chili, brinjal and *kharif* onion in **West Madhya Pradesh**.
- Nursery sowing of rice, sowing of maize, soybean and black gram and nursery sowing of *kharif* vegetables like tomato, chilli, brinjal, cauliflower etc. in **East Madhya Pradesh**.
- Land preparation for sowing of bajra and soybean and nursery preparation for vegetables in Grid Zone of Madhya Pradesh.

Chhattisgarh

- Nursery sowing of rice and sowing of soybean, maize, groundnut, moong, urd in Chhattisgarh.

West Bengal

- Nursery sowing of *aman* rice.
- Sowing of wet seeded *aman* rice (medium duration: MTU-7029, MTU1001, Pratiksha; long duration: CR1017, CR1018, Cr1019, Sabita) in Coastal Saline Zone.
- In Laterite and Red Soil Zone, sowing of rice in upland.
- Farmers with no irrigation facility are advised to get ready with seeds and wait for occurrence of appropriate rainfall for sowing in wet seedbed. They can go for dry seedbed sowing right now. Adopt short duration Rice variety like Shatabdi, Khitish and transplanting should be done when seedlings will be 3-4 weeks old.
- In Old Alluvial Zone, nursery preparation for vegetables like early cauliflower, brinjal and onion.
- Land preparation and sowing of soybean in Hill Zone.
- Land preparation for plantation of saplings of mango (Himsagar, Mallicka, Langra), guava (Safeda, L-49) and coconut (Eastcoastal, Hazari).

Jharkhand

- In South Eastern Plateau Zone, nursery preparation for long (140-150 days) duration rice varieties and land preparation and sowing for direct seeded upland rice, maize and pigeon pea.

- In South Eastern Plateau Zone, sowing of rainy season vegetables.
- In North Eastern plateau Zone, planting of ginger, turmeric & elephant foot yam and cultivation of high yielding varieties of maize and sowing of vegetables like long gourd, round gourd, bitter gourd, sponge gourd and cucumber.
- In Western Plateau Zone, land preparation and sowing of upland rice and nursery sowing of the marua rice.
- In Western Plateau Zone, land preparation and sowing and transplanting of vegetables, sowing of maize, pigeon pea, planting of ginger, turmeric & elephant foot yam and raising of rice nursery.

Odisha

- Nursery sowing of rice.
- Sowing of maize, cotton, groundnut, arhar, castor, red gram and planting of ginger and turmeric.
- Sowing of *kharif* pulses in upland areas.
- Upland paddy can be grown with very early or early maturing varieties such as Khandagi.
- In pata (typical low land), sowing of paddy can be taken up before onset of monsoon.

Bihar

- Nursery preparation for *kharif* rice (Low land: Rajshree, Satyam, Rajendra, Mehsooril, MTU 7029 (Swarna), Swarna Sub-1), sowing of *kharif* maize (Suwan, Deevki, Ganga-11, Shaktiman-1 and Shaktiman-2), onion (ADR, N-53, Bhima Super, Arka Kalyan), fodder crops like jowar, bajra and guar and planting of foot yam and turmeric in North Bihar.
- In South Bihar, sowing of medium duration rice varieties (Medium land: Sita, Kanak, IR 36, Rajendra, Shweta, Santosh, Shahbhagi, Medium duration (Hybrid): P.H.B.71, Pusa R.H.10, K.R.H 2, P.A.644, Pant Sankardhan for medium land).

East Uttar Pradesh

- Nursery sowing of long duration varieties and sowing of medium duration varieties of rice.
- Sowing of sunflower, jowar, moong, urad, arhar, groundnut, soybean, maize, bottle guard, cucumber, bitter guard, tinda etc., planting of banana and transplanting of brinjal, chilli and cauliflower.
- Planting of sugarcane and nursery raising of *kharif* onion.
- Nursery sowing of tomato, brinjal, bhindi, chilli and cauliflower.

Uttarakhand

- Nursery sowing of short duration rice varieties (Saket-4, Govind, Narendra-80, Pusa 2-21) and scented rice varieties (Pant Sugandh-15, Tarawadi Basmati, Pusa Basmati-1, Type-3, Basmati-370).
- Land preparation for sowing of groundnut, sorghum, pearl millets, pigeon pea and sesame.
- In Hill Zone of Uttarakhand, transplanting of rice, vegetables like tomato, capsicum and brinjal and sowing of pulses, soybean.
- In Sub-humid Sub-tropic Zone, nursery sowing of rice and sowing of cotton and bajra.

Himachal Pradesh

- Sowing of maize for fodder purpose along with cowpea and soybean.
- Transplanting of tomato, brinjal, capsicum, cabbage, cauliflower chilli and direct sowing of okra, French bean, cucumber, bitter gourd, summer squash, bottle gourd and ridge gourd.

In view of likely increase in rainfall over Northwestern parts of the country during later part of next fortnight, land preparation for sowing of *kharif* crops may be undertaken in West Uttar Pradesh, Haryana, Delhi and Rajasthan.